

HYUNDAI

AIR CONDITIONER WI-FI FUNCTION USER MANUAL

This description is applied to Air Conditioners with function. Please read the manual carefully before using the product and keep it for future reference.



WI-FI

STATEMENTS

Federal Communication Commission Interference Statement

FCC ID: 2ANDL-TCWBRCU1

This device complies with part 15 of the FCC Rules. Operation is subject to the following two conditions:

(1) This device may not cause harmful interference, and (2) this device must accept any interference received, including interference that may cause undesired operation.

Any Changes or modifications not expressly approved by the party responsible for compliance could void the user's authority to operate the equipment.

Note: This equipment has been tested and found to comply with the limits for a Class B digital device, pursuant to part 15 of the FCC Rules. These limits are designed to provide reasonable protection against harmful interference in a residential installation. This equipment generates, uses and can radiate radio frequency energy and, if not installed and used in accordance with the instructions, may cause harmful interference to radio communications. However, there is no guarantee that interference will not occur in a particular installation. If this equipment does cause harmful interference to radio or television reception, which can be determined by turning the equipment off and on, the user is encouraged to try to correct the interference by one or more of the following measures:

- Reorient or relocate the receiving antenna.
- Increase the separation between the equipment and receiver.
- Connect the equipment into an outlet on a circuit different from that to which the receiver is connected.
- Consult the dealer or an experienced radio/TV technician for help.

FCC Radiation Exposure Statement

This equipment complies with FCC radiation exposure limits set forth for an uncontrolled environment. This equipment should be installed and operated with a minimum distance of 20 cm between the radiator and your body.

RF Exposure: A distance of 20cm shall be maintained between the antenna and users, and the transmitter module may not be co-located with any other transmitter or antenna.

ISED Statement

Innovation, Science and Economic Development Canada
ICES-003 Compliance Label:
CAN ICES-3 (B)/NMB-3(B)

This device contains licence-exempt transmitter(s)/receiver(s) that comply with Innovation, Science and Economic Development Canada's licence-exempt RSS(s). Operation is subject to the following two conditions:

1. This device may not cause interference.
2. This device must accept any interference, including interference that may cause undesired operation of the device.

This equipment complies with ISED RSS-102 radiation exposure limits set forth for an uncontrolled environment. This equipment

should be installed and operated with a minimum distance of 20 cm between the radiator and any part of your body.

étiquette de conformité à la NMB-003 d'Innovation, Sciences et Développement économique Canada: CAN ICES-3 (B)/NMB-3 (B)

L'émetteur/récepteur exempt de licence contenu dans le présent appareil est conforme aux CNR d'Innovation, Sciences et Développement économique Canada applicables aux appareils radio exempts de licence. L'exploitation est autorisée aux deux conditions suivantes :

1. L'appareil ne doit pas produire de brouillage;
2. L'appareil doit accepter tout brouillage radioélectrique subi, même si le brouillage est susceptible d'en compromettre le fonctionnement.

Pour se conformer aux exigences de conformité CNR 102 RF exposition, une distance de séparation d'au moins 20 cm doit être maintenue entre l'antenne de cet appareil et toutes les personnes.

CONTENTS

1. Wi-Fi Module specification and Operation guideline	05
2. Install the Wi-Fi module (Optional)	05
3. Download and Install the App	05
4. Activate APP	06
5. Registration	06
6. Login	06
7. Add device	07
8. Air conditioner control	09
9. Account management	15
10. Troubleshooting	15

1. WI-FI MODULE SPECIFICATION AND OPERATION GUIDELINE

1. Minimum specifications on a Smart phone:

- Android 5.0 version or higher
- IOS 9.0 version or higher

2. Basic parameters for Wi-Fi module

PARAMETERS	DETAILS
Network frequency	2.400 - 2.4835GHz
Standards of WLAN	IEEE 802.11 b/g/n (channels 1-14,channels 1-13 for EU/AU,channels 1-11 for US/CA)
Protocol stack support	IPv4/TCP/UDP/HTTPS/TLS/DNS
Security support	WEP/WPA/WPA2/AES128
Network type support	STA/AP/STA+AP
Max. RF Power	18.5 dbm
Bluetooth frequency	2.402 - 2.480G
Bluetooth RF Power	9 dbmHz

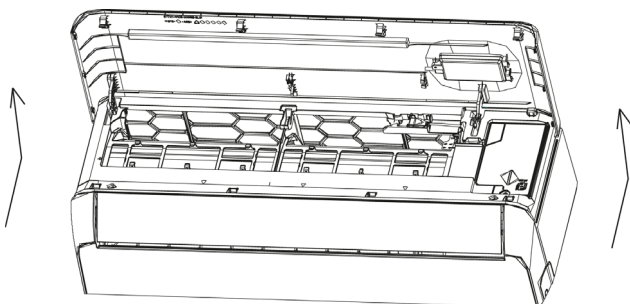
3. Operation Guidelines

Please take below simple guideline instruction as reference

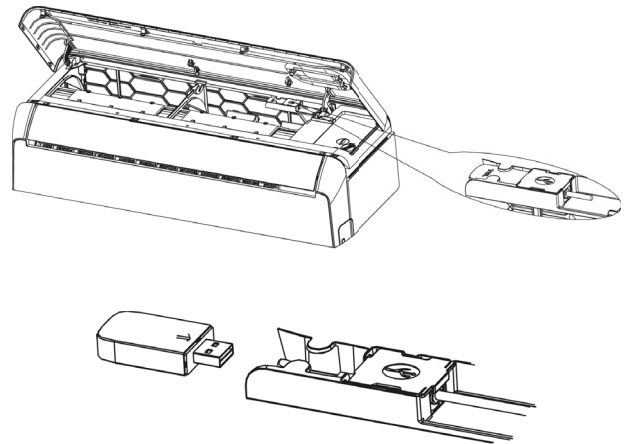
OPERATION STEPS	OPERATION ITEMS	NEW ACCOUNT	RE-INSTALL APP (REGISTERED BEFORE)
Step 1	Download and Install APP	YES	YES
Step 2	Activate APP	YES	YES
Step 3	Registration Account	YES	NO
Step 4	Login	YES	YES
Step 5	Add Device to control	YES	Registered Device will remain.

2. INSTALL THE WI-FI MODULE (OPTIONAL)

1. Open the panel of indoor unit.



2. Wi-Fi, follow the arrow and insert the USB Wi-Fi module into the reserved USB slot on the frame.



3. DOWNLOAD AND INSTALL THE APP



SmartLife-SmartHome

For Android smart phone

Method 1: Please scan the QR code with a browser scanner, download and install the APP.



Method 2: Open the Google "Play Store" on your smart phone and search "SmartLife-SmartHome", download and install the APP

For IOS smart phone

Method 1: Please scan the code follow the tips get into "AppStore", download and install the APP



Method 2: Open the Apple "AppStore" on your smart phone and search "SmartLife-SmartHome", download and install the APP.

Note:

Please enable the permissions of Storage/Location/Camera for this APP when installing. Otherwise it will have some problems when operating.

4. ACTIVATE APP

The first time the app is used, it will need activating.

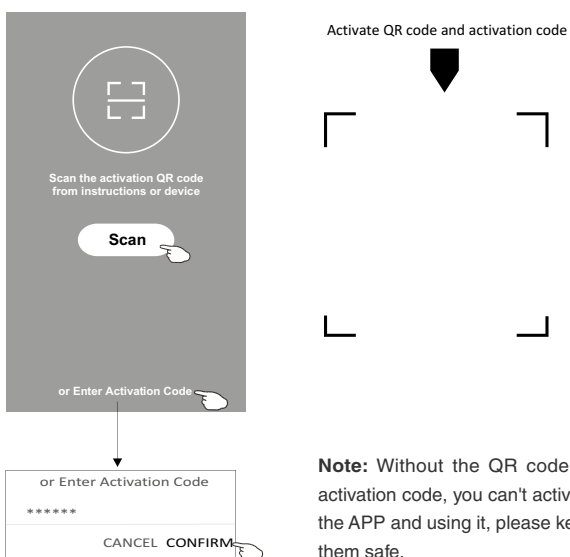
1. Launch the APP "Smart Life" on your smart phone.



SmartLife-SmartHome

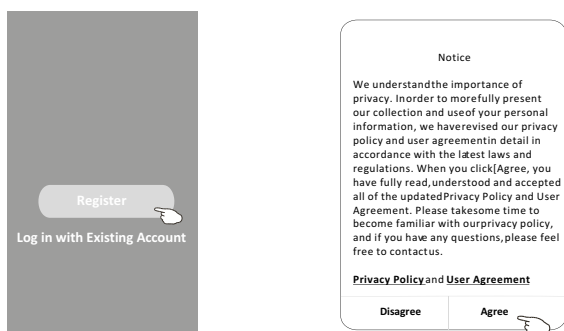
2. **Method 1:** Tap button "Scan" and scan the right Activate QR code

Method 2: Tap "or Enter Activation Code" in bottom of the screen, then enter the activate code and tap "CONFIRM".



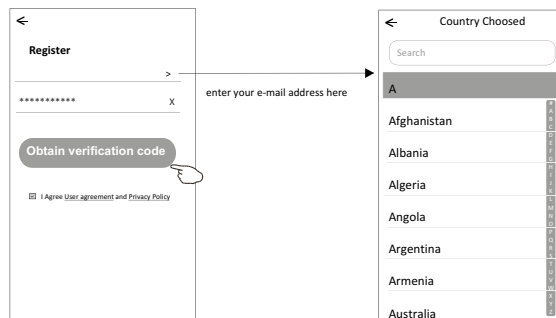
5. REGISTRATION

1. If you don't have any account please tap button "Register".
2. Read the Privacy Policy and tap "Agree".

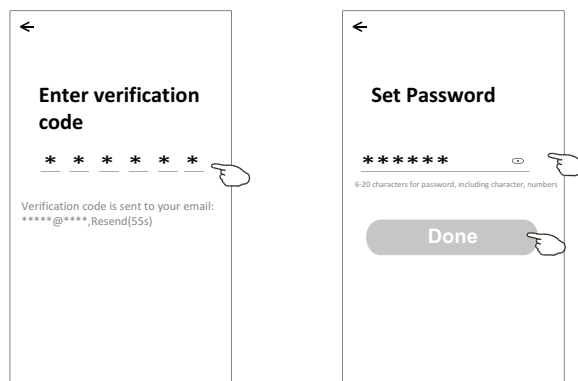


3. Tap "Log in with existing account".
4. Enter your registered account and password.
5. Tap "Log in" button

Search the country or slide the screen up/down to find and choose the Country.

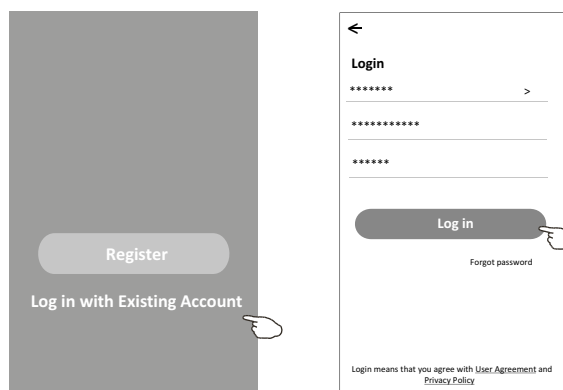


6. Enter the verification code you received from e-mail.
7. Set the Password with 6-20 characters including characters and numbers.
8. Tap "Done".



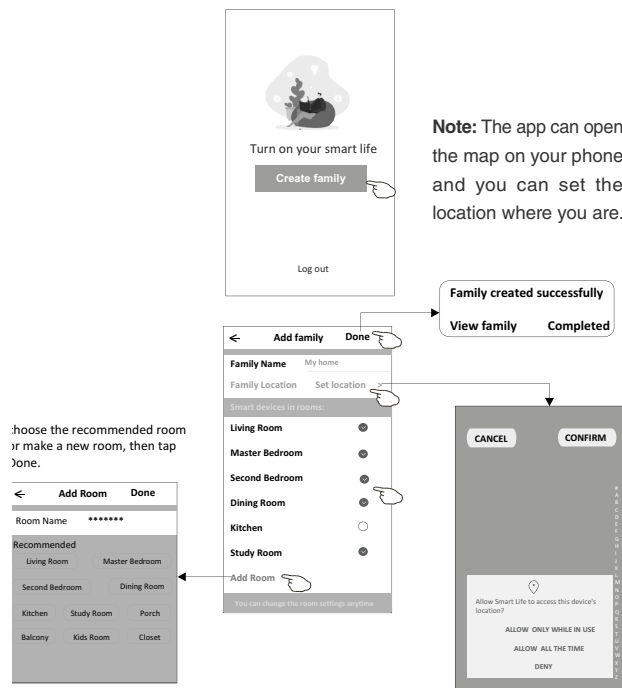
6. LOGIN

1. Tap "Log in with existing account".
2. Enter your registered account and password.
3. Tap "Log in" button



The first time the APP is used, Create family is needed:

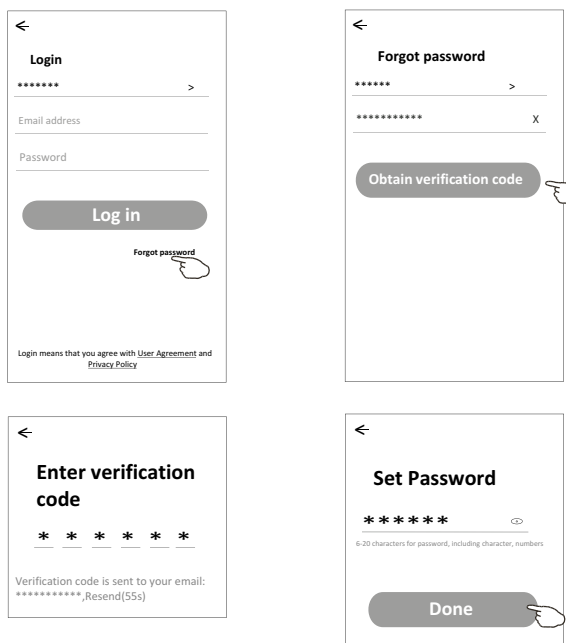
1. Tap "Create family".
2. Make name for the family.
3. Set the location.
4. Choose default rooms or add new rooms.
5. Tap "Done" and "Completed".



FORGOT THE PASSWORD

If you forgot the password or you want to reset the password, operate as below:

1. Tap "Forgot password".
2. Enter your account(e-mail address) and tap button "Obtain verification code".
3. Enter the verification code received by your e-mail.
4. Set the new password and tap button "Done".

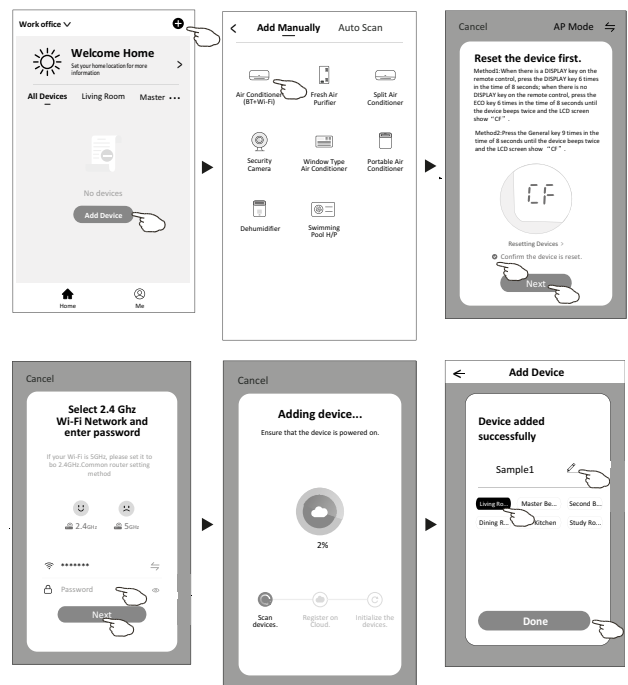


7. ADD DEVICE

THERE ARE 3 METHODS TO ADD THE DEVICE.

Method 1: CF mode

1. Power on the indoor unit, no need to launch the air conditioner.
2. Click "+" in the upper right corner of the "Home" screen or tap "Add device" on the room which has no device.
3. Tap the "Air conditioner(BT+Wi-Fi)" logo.
4. Follow the comments on the next screen to reset the Wi-Fi module then check "Confirm the device is reset" and tap "Next".
5. Input the password of the Wi-Fi which the same as your smart phone connected, then tap "Next".
6. You can see the percent rate of connecting process, at the same time:
 - "PP", "SA", "AP" shining in turn on the indoor display.
 - "PP" means "Searching the router"
 - "SA" means "connected to the router"
 - "AP" means "connect"

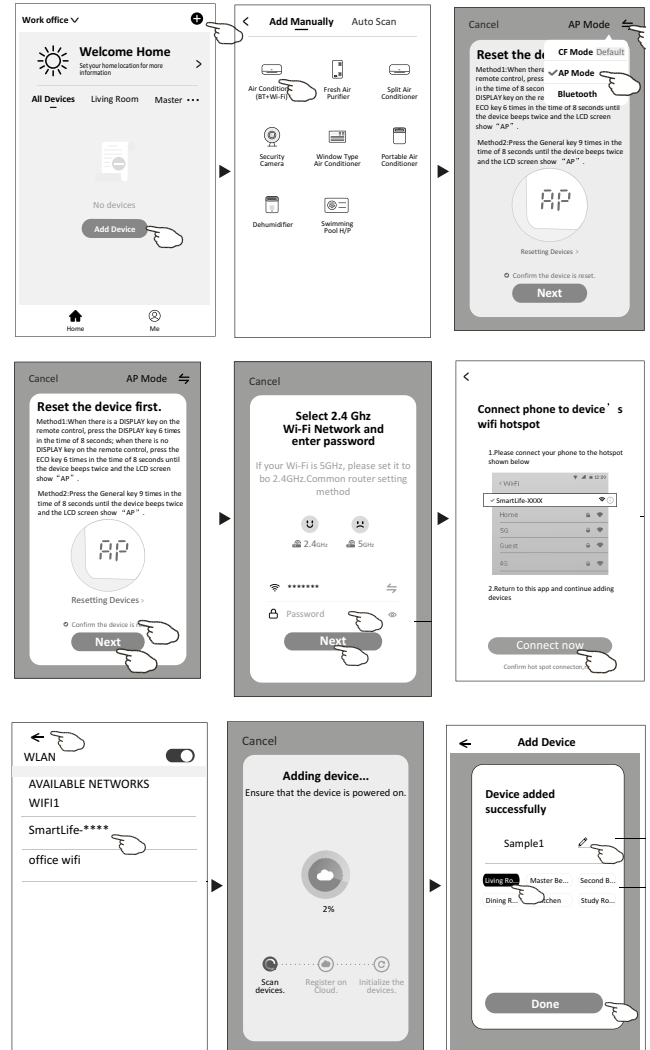
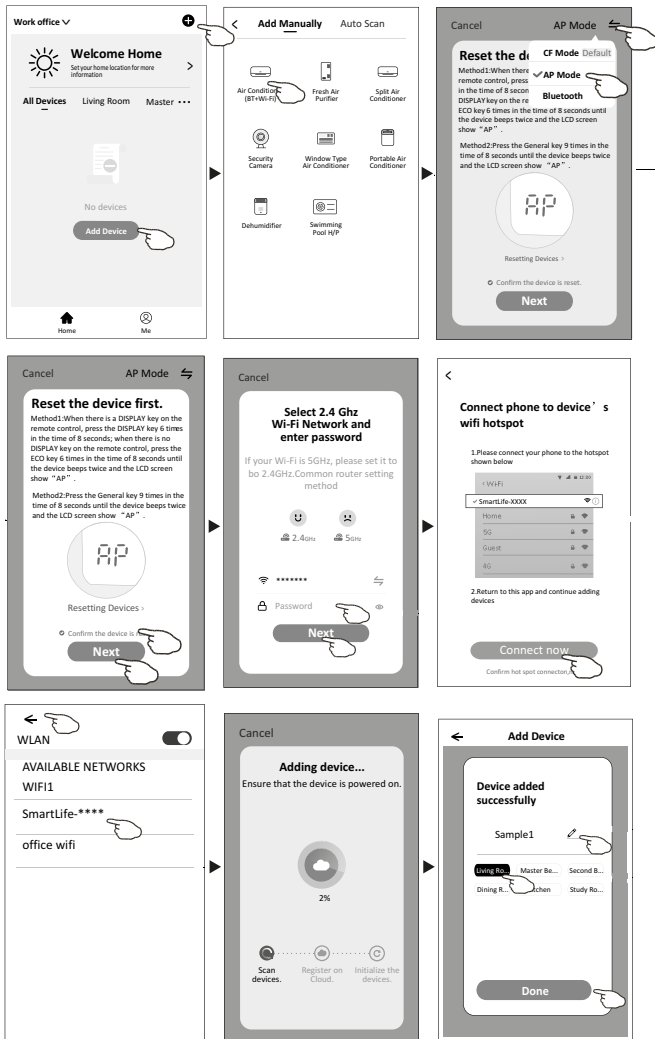


Method 2: AP mode

1. Power on the indoor unit, no need to launch the air conditioner.
2. Click "+" in the upper right corner of the "Home" screen or tap "Add device" on the room which has no device.
3. Tap the "Air conditioner(BT+Wi-Fi)" logo.
4. Tap in the upper right corner and choose "AP Mode" then follow the comments on the screen to reset the Wi-Fi module then check "Confirm the device is reset" and tap "Next".

- Input the password of the Wi-Fi which the same as your smart phone connected, then tap "Next".
- Read the instruction carefully and tap "Connect now".
- In the network setting screen, select "SmartLife-****", and tap ".
- You can see the percent rate of connecting process, at the same time
 - "PP", "SA", "AP" shining in turn on the indoor display.
 - "PP" means "Searching the router"
 - "SA" means "connected to the router"
 - "AP" means "connected to the server"

- Select one of the found device and tap "+"
- Input the password of the Wi-Fi which the same as your smart phone connected, then tap "Next".
- You can see the percent rate of connecting process, at the same time:
 - "PP", "SA", "AP" shining in turn on the indoor display.
 - "PP" means "Searching the router"
 - "SA" means "connected to the router"
 - "AP" means "con



Method 3: Blue tooth mode

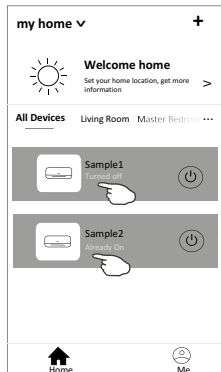
- Power on the indoor unit, no need to launch the air conditioner.
- Click "+" in the upper right corner of the "Home" screen or tap "Add device" on the room which has no device.
- Tap the "Air conditioner(BT+Wi-Fi)" logo.
- Make sure Blue tooth of your smart phone is available.

Tap in the upper right corner and choose "Bluetooth" then follow the comments on the screen to reset the Wi-Fi module then check "Confirm the blue tooth is reset" and tap "Next".

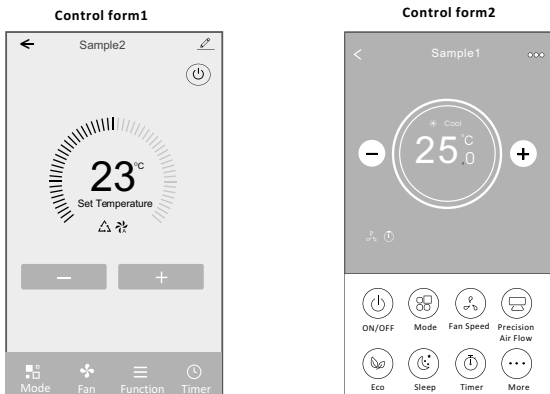
8. AIR CONDITIONER CONTROL

The device control screen will pop up automatically after adding the device.

The device control screen will pop up manually by tapping the device name on the home screen.

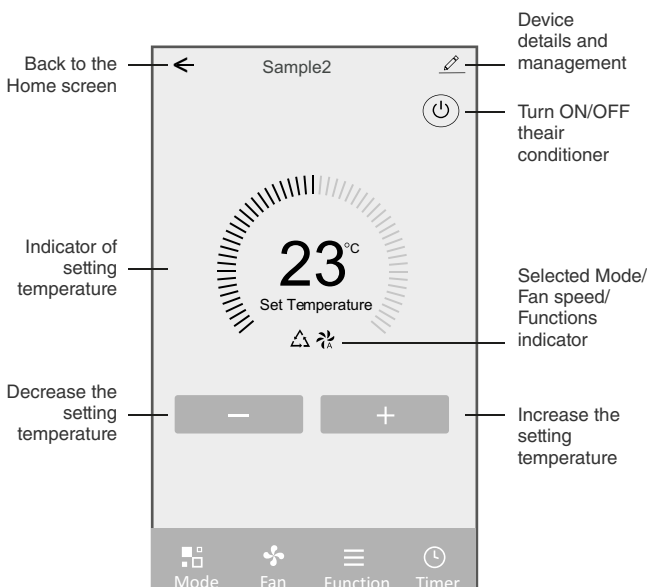


Note: There are two different control forms base on different software or Wi-Fi module firmware. Please read the manual carefully base on the real control interface



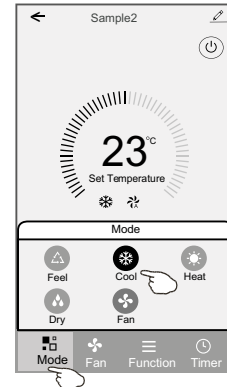
CONTROL FORM 1

The main control interface



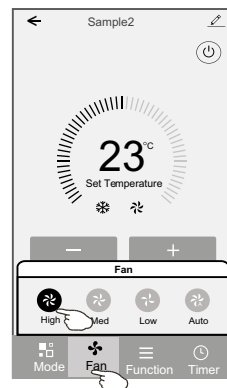
Control form 1: Mode setting

1. Tap Mode to pop up the Mode screen.
2. Select one of the mode Feel/Cool/Heat/Dry/Fan.
3. Tap anywhere around the setting temperature to cancel the Mode setting.



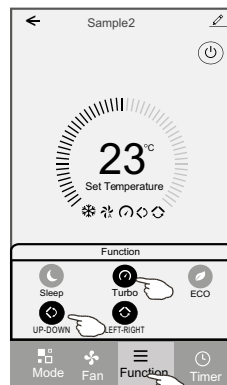
Control form 1: Select fan speed

1. Tap Fan to pop up the Fan screen.
2. Select one of the fan speed High/med/Low/Auto.
3. Tap anywhere around the setting temperature to cancel the selection.



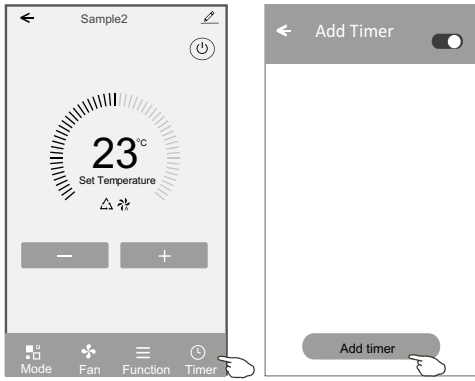
Control form 1: Function setting

1. Tap Function to pop up the Function screen.
2. Select one of the functions Sleep/Turbo/ECO.
3. Select UP-DOWN/LEFT-RIGHT for auto swing with direction of UP-DOWN/LEFT-RIGHT.
4. Tap anywhere around the setting temperature to cancel the Function setting.

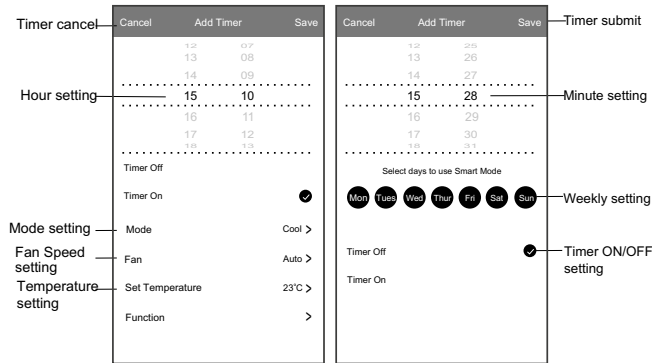


Control form 1: Timer adding

1. Tap Timer to pop up the Add Timer screen.
2. Tap Add Timer.

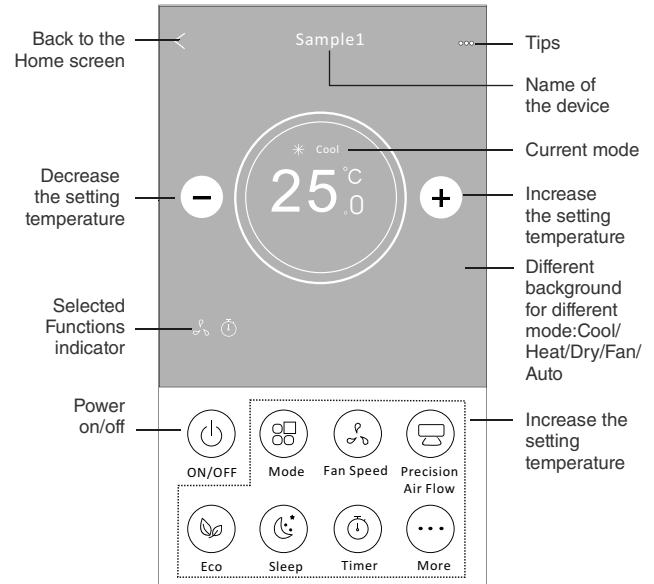


3. Select the time, select the repeat days and Timer on/off.
4. Select the Mode/Fan speed/Function and select the setting
5. temperature for Timer on.
Tap Save to add the timer.

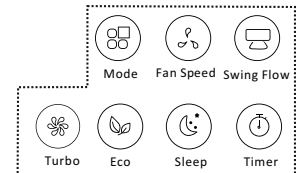


CONTROL FORM 2

The main control interface

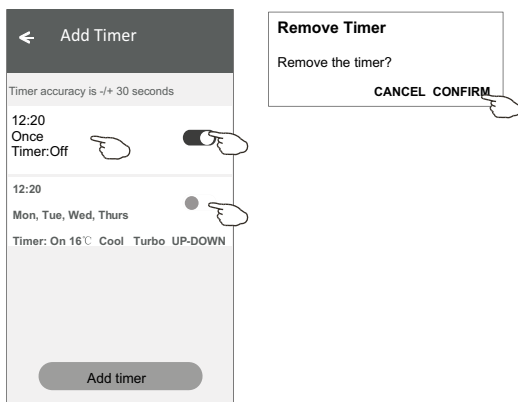


Note: it may appear slightly different, depending on the air conditioner model. Example as below:



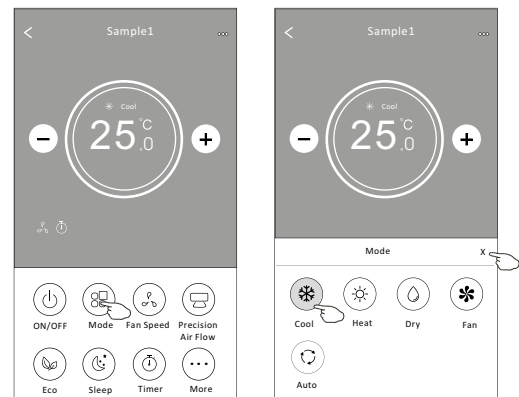
Control form 1: Timer Management

1. Tap the bar of timer to edit the Timer like the Timer adding process.
2. Click the switch to enable or disable the Timer.
3. Holding the Timer bar about 3 seconds and pop up the Remove Timer screen, tap CONFIRM and remove the Timer.



Control form 2: Mode setting

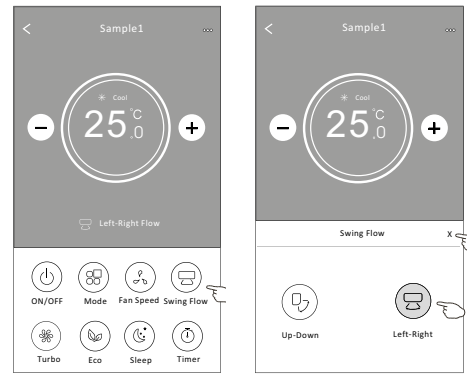
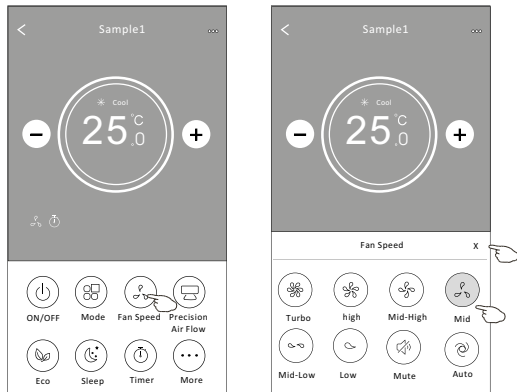
1. Tap the Mode button.
2. There are 5 modes on the Mode screen, tap one button to set the Air conditioner working mode.
3. Tap the X button to back the main control screen.
4. The mode and background will change on the screen.



Note: please read the details of each mode in the user manual to control more comfortable.

Control form 2: Fan speed selection

1. Tap the Fan speed button.
2. Choose your desired fan speed and tap it.
3. Tap the X button to back the main control screen.
4. The selected fan speed indicator will appear on the screen.



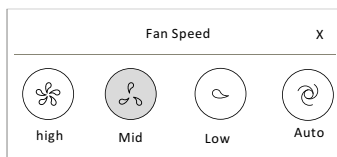
Control form 2: ECO function

1. For Eco function, just tap the button to activate the function, the button will be lighting and the indicator will appear on the screen.
2. Tap again to disable the function.
3. Temperature controlled for some air conditioner model:
 - In Cooling mode, the new setting temperature will $\geq 26^{\circ}\text{C}$.
 - In heating mode, the new setting temperature will $\leq 25^{\circ}\text{C}$.



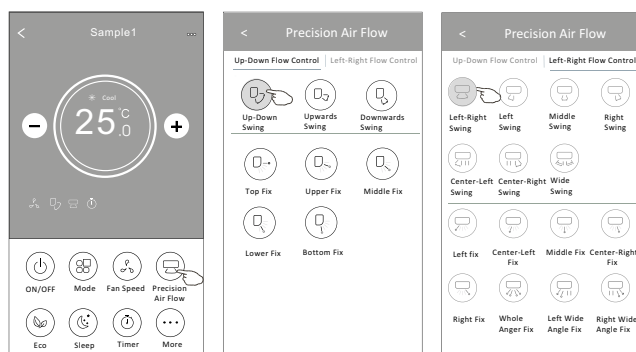
Mode	Fan Speed
Cool	All speeds
Fan	All speeds
Dry	—
Heat	All speeds
Auto	All speeds

Note: Fan Speed can't be adjusted on Dry mode



Control form 2: Air Flow control

1. Tap the Precision Air Flow button or Swing Flow button.
2. Choose your desired air flow and tap it.
3. Tap the X button to back to the main control screen.
4. The selected air flow indicator will appear on the screen.

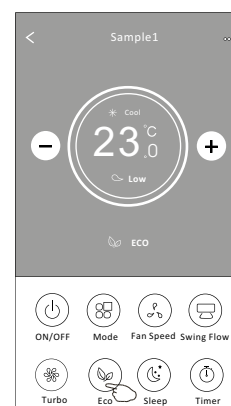


Note: The Main control screen and Air Flow screen may appear slightly different, depending on the air conditioner model. Example as below:

Mode	ECO enabled
Cool	Yes
Fan	—
Dry	—
Heat	Yes
Auto	—

ECO is disabled on Fan/ Dry/Auto mode .

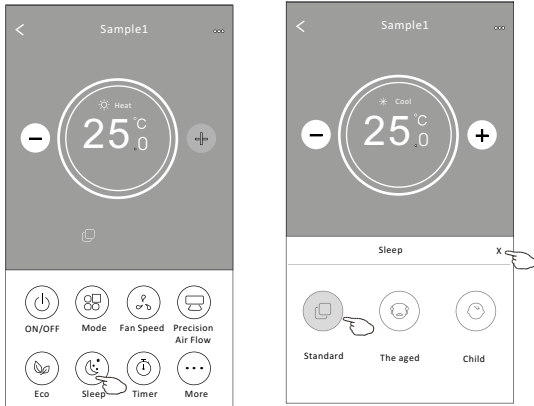
Note: The Main control screen and ECO control method may appear slightly different, depending on the air conditioner model. Example as below:



Note: ECO is disabled on Turbo/Sleep mode too for some air conditioner mode.

Control form 2: Sleep function

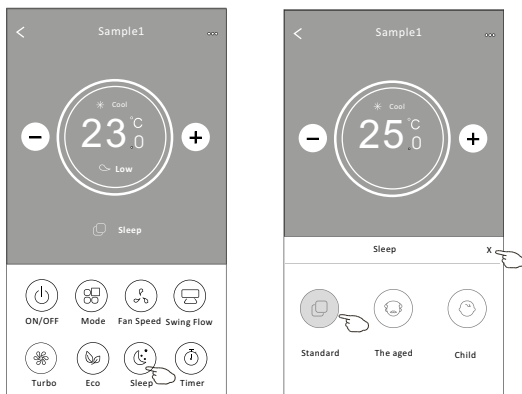
1. Tap the Sleep button.
2. Choose your desired sleep mode and tap it.
3. Tap the X button to back to the main control screen.
4. The selected sleep mode indicator will appear on the screen.



Mode	Sleep enabled
Cool	Yes
Fan	—
Dry	—
Heat	Yes
Auto	—

Sleep is disabled on Fan/ Dry/Auto mode.

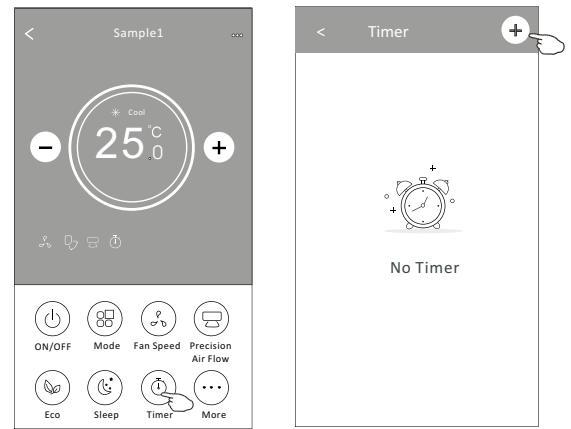
Note: The Main control screen may appear slightly different, depending on the air conditioner model. Example as below:



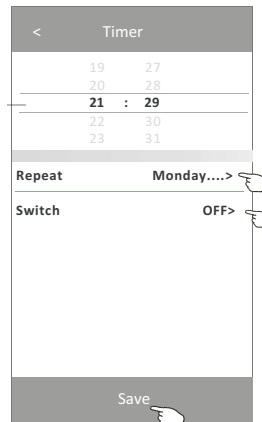
Note: Sleep is disabled on Turbo/Sleep mode too for some air conditioner model.

Control form 2: Timer(on) setting

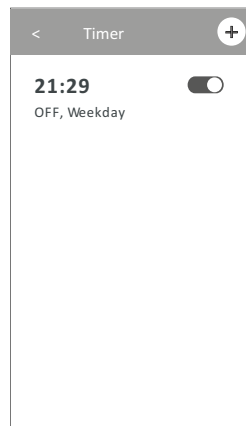
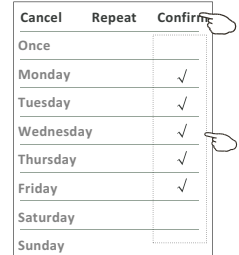
1. Tap the Timer button.
2. Tap + in the upper right corner of the Timer main screen.
3. Choose the Time/Repeat/Switch OFF then tap Save.
4. The timer(off) will appear on the Timer main screen.



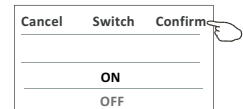
Slide up or down to select time



Tap repeat> then tap your desired repeat days or Once, then tap Confirm your selection.

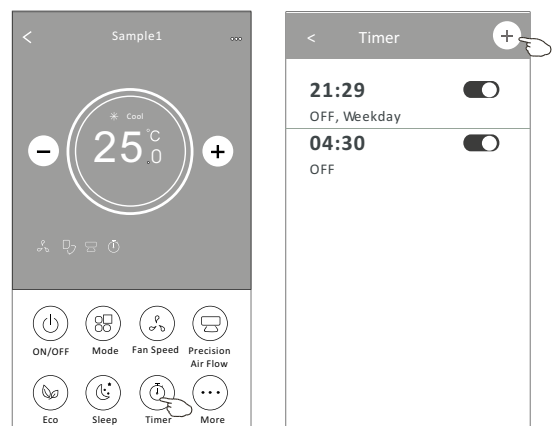


Tap Switch> then slide the screen to choose ON and Confirm.



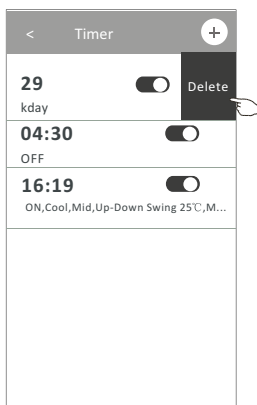
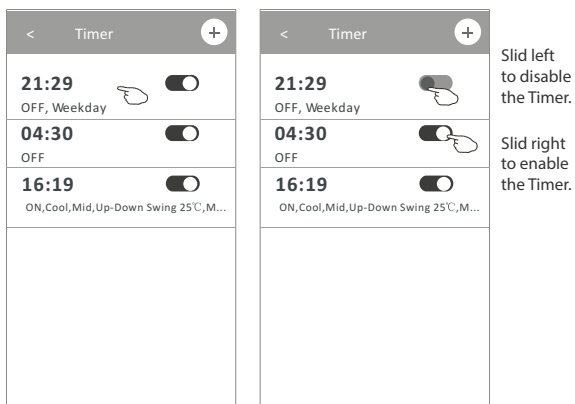
Control form 2: Timer(off) setting

1. Tap the Timer button.
2. Tap + in the upper right corner of the Timer main screen.
3. Set the Time/Repeat Date/Switch(ON)/Temperature/Mode/ Fan speed/Air Flow as your desired and then tap Save.
4. The timer will appear on the Timer main screen.



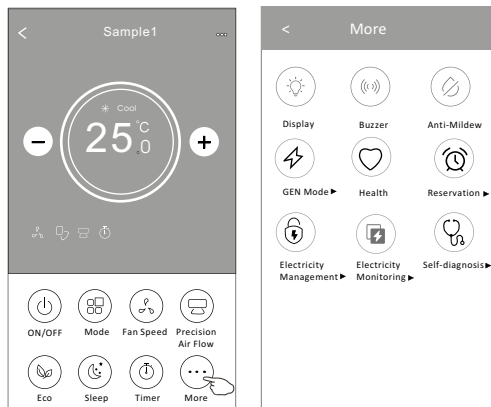
Control form 2: Timer management

- Change the Timer setting:
 - Tap anywhere of the timer list bar except the switch bar to get into the Timer setting screen, change the setting and then tap save.
- Enable or Disable the Timer:
 - Tap the left of the switch to disable the Timer.
 - Tap the right of the switch to enable the Timer.
- Delete the Timer:
 - Slide the list bar of the Timer from right to left until Delete button appear, then tap delete.



Control form 2: More functions

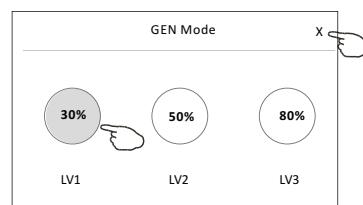
- Tap the More button to operate additional functions if it appears on the screen.



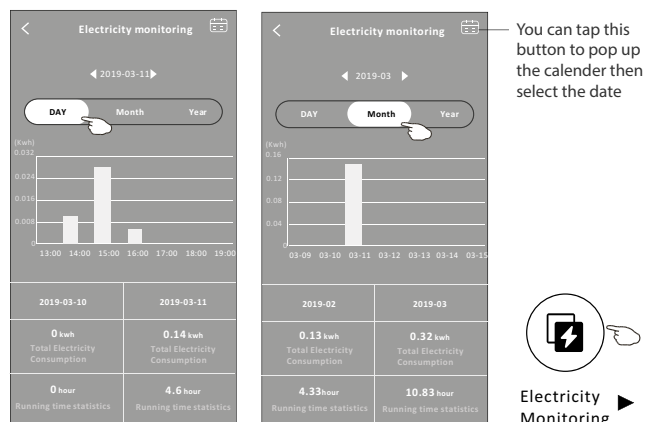
Note:
Some air conditioner model don't have the more button.

Note:
The appearance maybe different, some icons will be hidden if the air conditional do no have this function or do not enable on the current mode.

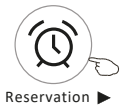
- Tap the to switch on/off the indoor LED display.
- Tap the to switch on/off the buzzing when operating through Wi-Fi APP.
- Tap the button to activate the Anti-Mildew function, if it is available on the screen. After AC turning off , it will start drying , reduce residual moisture and prevent mould, after function finish, it will automatically turn off.
- Tap the button to switch on/off the healthy function, if it is available on the screen. It activate the antibacterial ioniser function.This function only for models with the ioniser generator.
- Tap the button, if it is available on the screen. In this Mode, you can choose one of the three levels of current. The air conditioner will maintain proper current to save energy.



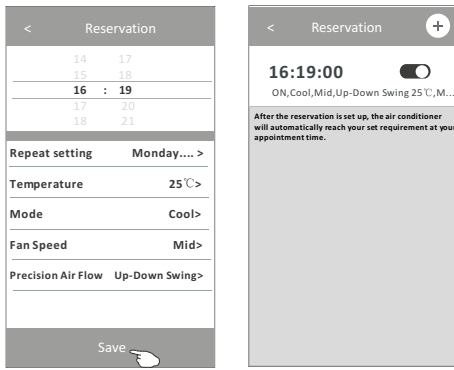
- Tap the "Electricity Monitoring" button if it is available on the screen. In this function, you can monitor the air conditioner electricity consumption.



- Tap the button, if it is available on the screen. Check the details of the Self-Cleaning function on User Manual.
- Tap the button , if it is available on the screen. This function help keep the room temperature over 8°C. Check the details of the 8°C Heat function on User Manual.
- Tap the "Reservation" button , if it is available on the screen. You can set the time, repeat day, temperature, mode, fan speed, air flow as you desired and then tap Save to activate the function. The air conditioner will automatically reach your settings at the appointment time.



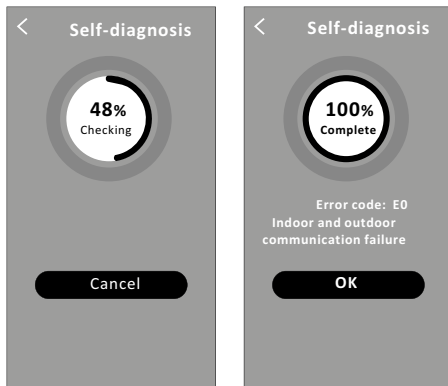
Reservation ▶



11. Tap the "Self-diagnosis" button, if it is available on the screen. The air conditioner will automatically diagnosis itself and indicate the Error code and the problem instructions if it possible.




Self-diagnosis ▶




Photosensitive




12. Tap the  button if it is available on the screen. This function allow the air conditioner to turn on/off the display automatically according to the light intensity.

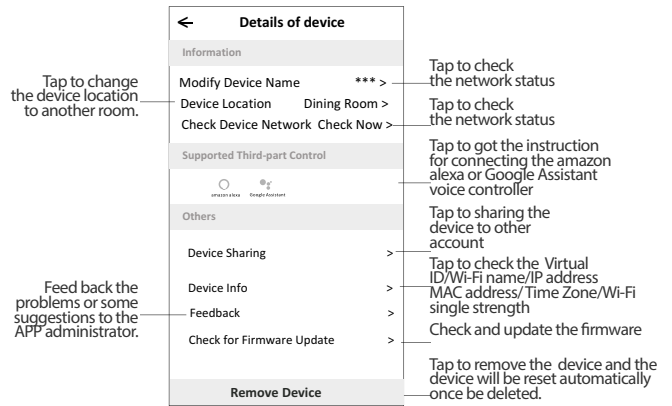
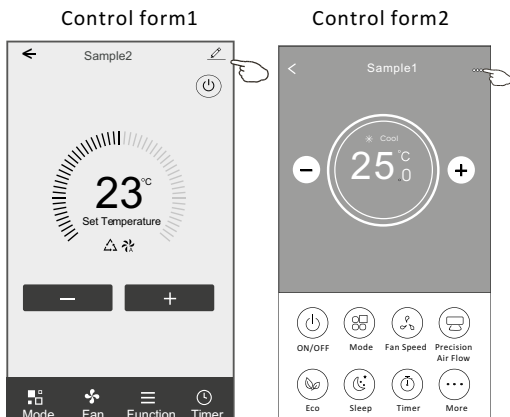
Soft Wind



13. Tap the  button if it is available on the screen. In this function, the air conditioner will blow soft airflow through the micro holes on the deflector.

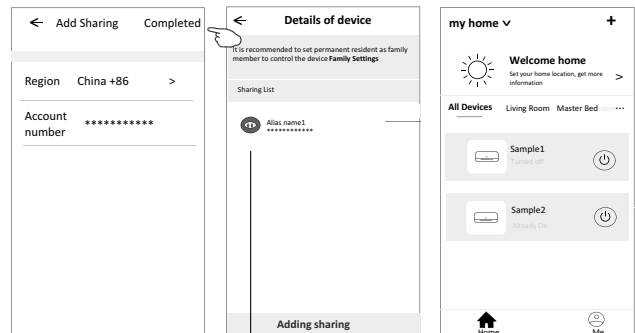
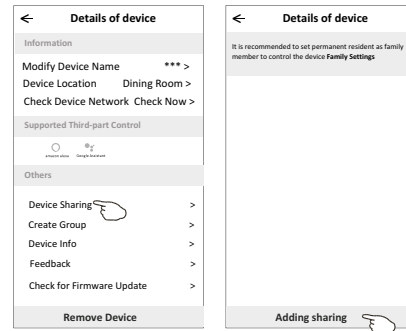
Device details and management

Tap on  control form1 or tap ... on control form2 , get into the device details screen. Here you can get some useful information and sharing the device to other accounts. Check the following pictures and instructions carefully



How to share the devices to other accounts?

1. Tap "Device Sharing" and pop up Device Sharing screen.
2. Tap "Add Sharing".
3. Select the region and enter the account which you want to sharing.
4. Tap "Completed", the account will appear on your sharing list.
5. The received sharing members should hold pressing the home screen and slide down to refresh the device list, the device will appear on the device list.

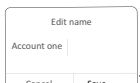
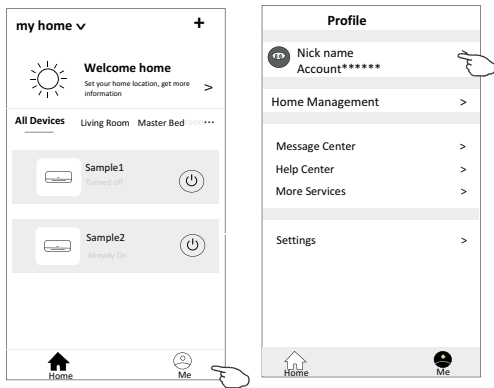


Hold the bar about 3s then you can delete the sharing account.

Hold on and slide down to refresh the device list.

9. ACCOUNT MANAGEMENT

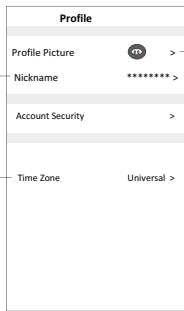
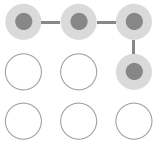
Account Profile setting



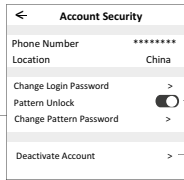
Change the nick name of your account

Select the time zone

Set a pattern password for launching the APP



Select a picture for the account from local album



Change the password like reset password on page 7

Tap the switch to enable or disable the Pattern password

Please carefully to deactivate the account for all data will be delete

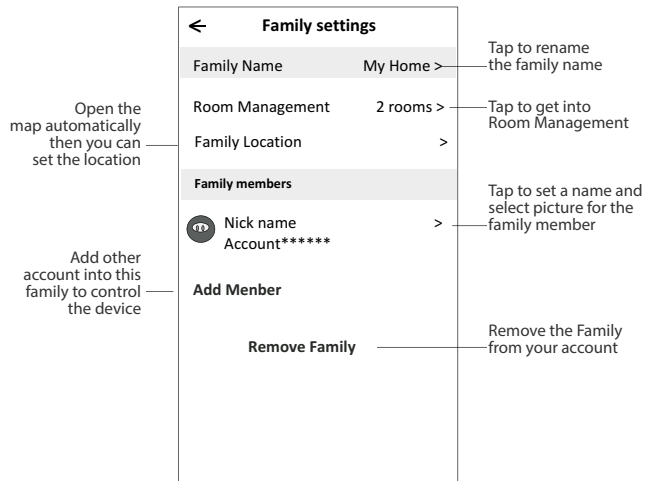
Home(Family) management

1. Tap the name of home at the left upper corner of the Home Screen and select the Home Management. Or tap Me and tap Home Management.
2. Tap one of the families in the family list and get into Family Settings screen.



Note: Tap "Add family" and refer to page 6 to add a new family

3. Set the family as the following indicators.



NOTICE



1. For technical update, there is maybe deviation of the actual items from what is on the manual. Please refer to your actual product and APP.
2. Smart air conditioner APP can be altered without notice for quality improvement and also be deleted depending on the circumstances of manufacturing firms .
3. In case Wi-Fi signal strength is weakened, smart App may be disconnected. So make sure the indoor unit near to wireless router.
4. DHCP server function should be activated for wireless router.
5. The internet connection may fail because of a firewall problem. In this case, contact your internet service provider.
6. For smart phone system security and network setting, make sure Smart air conditioner APP is trusted.

10. TROUBLE SHOOTING

DESCRIPTION	ANALYSIS OF CAUSE
Air conditioner can't be configured successfully	<ol style="list-style-type: none"> 1. Check the mobile connected WLAN router SSID and password is correct; 2. Check whether there are additional settings of WLAN router as shown below. <ul style="list-style-type: none"> • Firewall by router itself or by PC • MAC address filtering • Hidden SSID • DHCP server <p>Reboot WLAN router, mobile device and air conditioner (WLAN module) and connect air conditioner by CF mode again. Before rebooting, check nobody has already connected to same air conditioner.</p>
Mobile can't control air conditioner	<ol style="list-style-type: none"> 1. When air conditioner (WLAN module) is rebooted and app displays Device remove, ignoring this confirmation will lead to mobile device losing control permission of the air conditioner. You will need to connect the air conditioner by CF mode again.

DESCRIPTION	ANALYSIS OF CAUSE
Mobile can't control air conditioner	<p>2. In case of power failure, mobile device will lose control permission of air conditioner for 3 minutes after power failure. (Notification will now show up on the mobile device.) If you cannot control the app (air conditioner) even after power restored, you will need to connect the air conditioner by CF mode again.</p>
Mobile can't find air conditione	<p>1. Smart Life App display Air conditioner Device offline. Please check the following conditions.</p> <ul style="list-style-type: none"> • The air conditioner has been reconfigured. • Air conditioner out of power. • Router out of power. • Air conditioner can't connect to router. • Air conditioner can't connect to network through the router. • Mobile device can't connect to network. <p>2. After adding the device, it disappears in device list. Hold and slide down to refresh the device list. If it has no change, shut down the app and start again.</p>



+49 7941 6433976
support@hyundai-home.pt
hyundai-climate.pt

HYUNDAI



GENUINE PRODUCT OF
HYUNDAI CORPORATION

BAUF HOME, UNIPessoal LDA
Alto Business Park, R. Alexandre Herculano 3,
2626-506 Póvoa de Santa Iria, Portugal.
Tel: +351 961 142 669
E-mail: support@bauf-home.pt
Web: www.bauf-home.pt

Supplied by HYUNDAI Corporation Holdings, Korea
Imported/Distributed by BAUF